



# STAALKAT FARM PACKER 70

Packing made easy

# Unpack, plug in, pack eggs

The STAALKAT farmpackers, what you see is what you get. Successful design is more than just shapes and great lines. It's also about sensing that the equipment is exactly right. This is experienced with the STAALKAT farmpackers. A dynamic, robust design, with the smallest footprint, made to pack eggs in the most natural way – straight line, point down!

Thanks to their outstanding performance, proven robustness, low energy consumption and easy maintenance, the STAALKAT farmpackers are your best bet day in and day out. This is why the STAALKAT farmpackers are found in all corners of the world.

Every STAALKAT Farmpacker is created with the guiding principle that they should be easy to use, so you can focus on getting your eggs packed and spend less time figuring out how to maintain, determine replacement parts and worrying about up time. If you've never owned a STAALKAT farmpacker chances are you will know it inside and out in no time.

The STAALKAT farmpackers are designed with your farm environment in mind. Simple, robust, reliable and flexible.

Maximum up-time – 100% correct packing – easy to maintain – all day – every day is the key to optimizing your business. And know-how in the SANOVO TECHNOLOGY GROUP organisation will help you to achieve this goal.

## Safety

When opening the cover during operation the whole process automatically stops to prevent any harm to the operator or to others.



## Take away conveyor

For buffering up to 6 filled trays. Height of the take away conveyor can be decided during installation. Pressure control switch will stop the farmpacker automatically when conveyor is full and start automatically when emptied.



## Detachable rollers

Spring loaded easy snapon, snap-off rollers. All rollers which are bringing the eggs towards to orientation position can be taken out within minutes whenever cleaning of this section is needed. Rollers are made of natural rubber compound in combination with soft plastic for the most gentle egg handling possible.

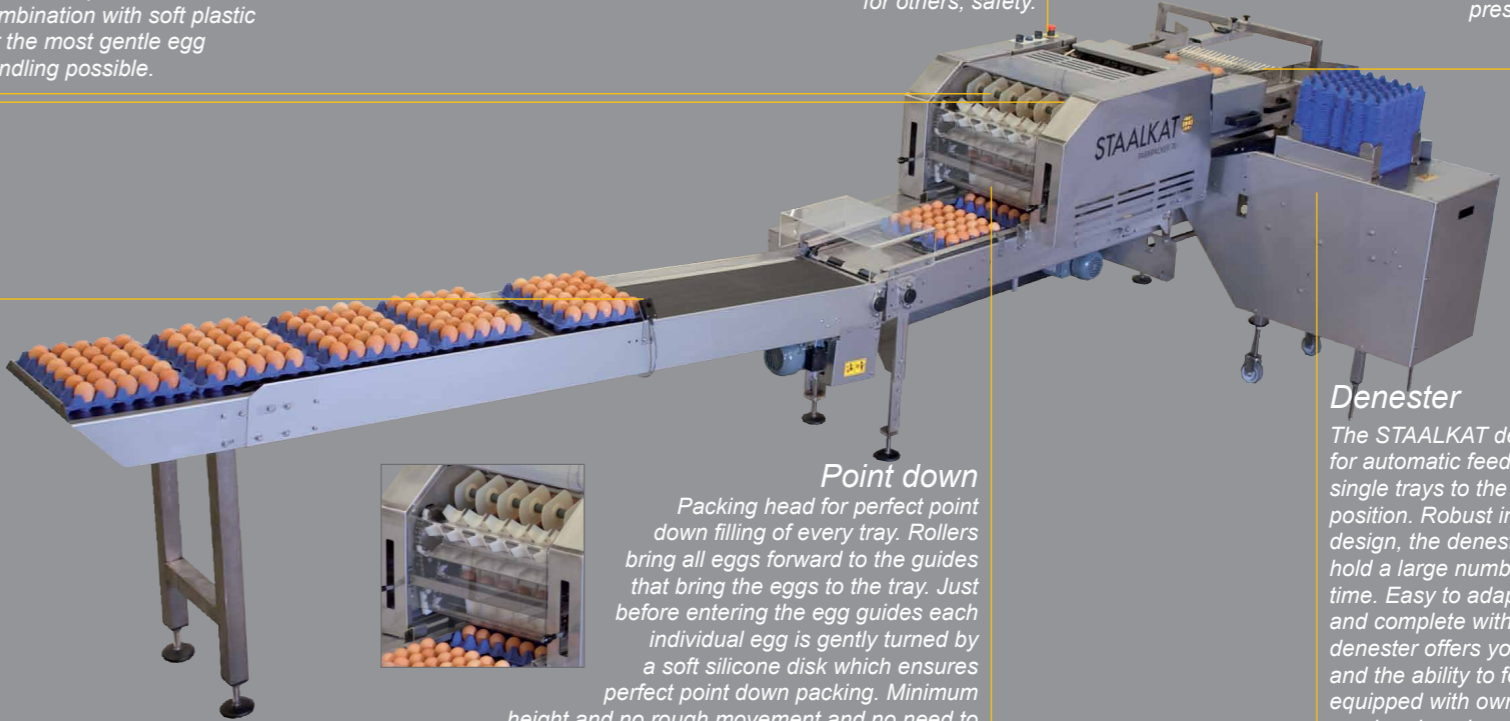


## Simple control

Simple control, easy to understand and most important easy to use. Besides switching the farmpacker on and off the same button can be used to inch the machine for cleaning, checking or adjusting. An emergency stop button is standard for your own, and for others, safety.

## Detachable accumulator

Detachable and high-pressure cleanable accumulator. Within 2 minutes the part which can contaminate the most can be taken out for a good high pressure cleaning job. Equipped with pressure control switch for controlling incoming egg flow.



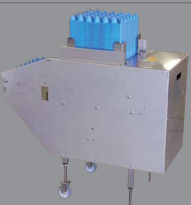
## Point down

Packing head for perfect point down filling of every tray. Rollers bring all eggs forward to the guides that bring the eggs to the tray. Just before entering the egg guides each individual egg is gently turned by a soft silicone disk which ensures perfect point down packing. Minimum height and no rough movement and no need to drop in a plastic cup.



## Denester

The STAALKAT denester for automatic feeding of single trays to the packing position. Robust in its design, the denester will hold a large number of trays at any given time. Easy to adapt to different tray types and complete with missing tray detector, the denester offers your operator ease of mind and the ability to focus on the task at hand. Equipped with own drive unit the denester can be placed on the right or left side of the farmpacker.



# A world of options



**ACCUMULATOR EXTENSION 860 MM**  
Extension with belt width of 600 mm required when egg conveyor is connected side ways on the Farmpacker. Extension is equipped with separate drive to ensure optimum egg regulation towards packing position.



**FARMGRADER 80**  
Washable electronic weighing unit which can be placed between egg conveyor and Farmpacker. Programmable weight classes can be sent to Farmpacker or to two hand collecting shelves. Data can be transferred to MS Excel by standard USB storage device



**PRE CANDLING UNIT WITH CANDLING BOOTH**  
Pre candling unit complete with belt, soft high friction rollers and candling booth with light from above. Suitable for manual loading of eggs from multiple egg conveyors from each side or one coming straight on the back



**EGG COUNTER**  
Electronic counter for keeping track of total eggs packed. The counter has the possibility to add or deduct amount of eggs taken out by hand during pre candling.



**CURVES: 90° AND 180°**  
90 or 180 degree curves can be combined with the take away conveyor or stacker. Left and right-handed versions available, different belt lengths in between two 90 degree turns for optimal machine configuration.



**EXTRA LONG ACCUMULATOR EXTENSION 1280 MM**  
Extension with belt width of 600 mm, required when multiple egg conveyors are connected side ways on the Farmpacker. Extension is equipped with separate drive to ensure optimum egg regulation towards packing position.



**EGG WASHER, DRYER AND OILER**  
Egg washer and dryer for clean and dry eggs. This stand alone unit can be placed between egg conveyor and farmpacker, and can be equipped with egg oiler unit if required.



**PRE CANDLING UNIT, FOR SIDE INFEEED**  
Pre candling unit complete with belt and soft high friction rollers. The tube light placed above the rollers gives maximum overview on the work area during operation. Suitable for egg conveyors of max 520mm width coming from each side.



**TRAYSTACKER**  
Stacking single pulp or plastic trays into stacks of 6 trays high. Inside is made of stainless steel solid guides which together with clutch on the stacker motor will prevent any part breakage.



**ROBOT PALLETIZING**  
Fully automatic system for placing stacks of eggs on a pallet. Usable for plastic or pulp trays, card board or preformed intermediate layers. Multiple pallet positions and different configurations are possible.



**EXTRA WIDE ACCUMULATOR EXTENSION 890 MM**  
Extension with belt width of 1200mm required when multiple egg conveyors are connected from the back of the Farmpacker. Can also be used if egg conveyors are coming from the side. Equipped with separate drive unit to ensure optimum egg regulation towards packing position.



**PRE CANDLING UNIT**  
Pre candling unit which can be placed between egg conveyor and Farmpacker. This unit consists of soft high friction rollers which will turn every egg for optimum quality check. Equipped with tube light.



**PRINTING AND STAMPING**  
Various printing and stamping options available.



**EXTENDED OUTFEED BELT FOR TRAYSTACKER**  
Up to 12 stacks are buffered one by one on the belt or forwarded to the take away position.



**FIRST AID KIT**  
Although your STAALKAT Farmpacker is delivered with spare parts this first aid kit enables you to do most of the regular maintenance.

**CRITICAL AID KIT**  
Contains those parts that will ensure ongoing production in any case.

## Packing made easy

*Investing in packing systems is a long term relationship, we understand this and make to the point packers that do just what you need: pack your eggs.*

*STAALKAT farmpackers are built tough with a soft spot for eggs! Providing you with reliability and ease of mind, without worrying about maintenance and up time. The STAALKAT Farmpackers just keep working.*

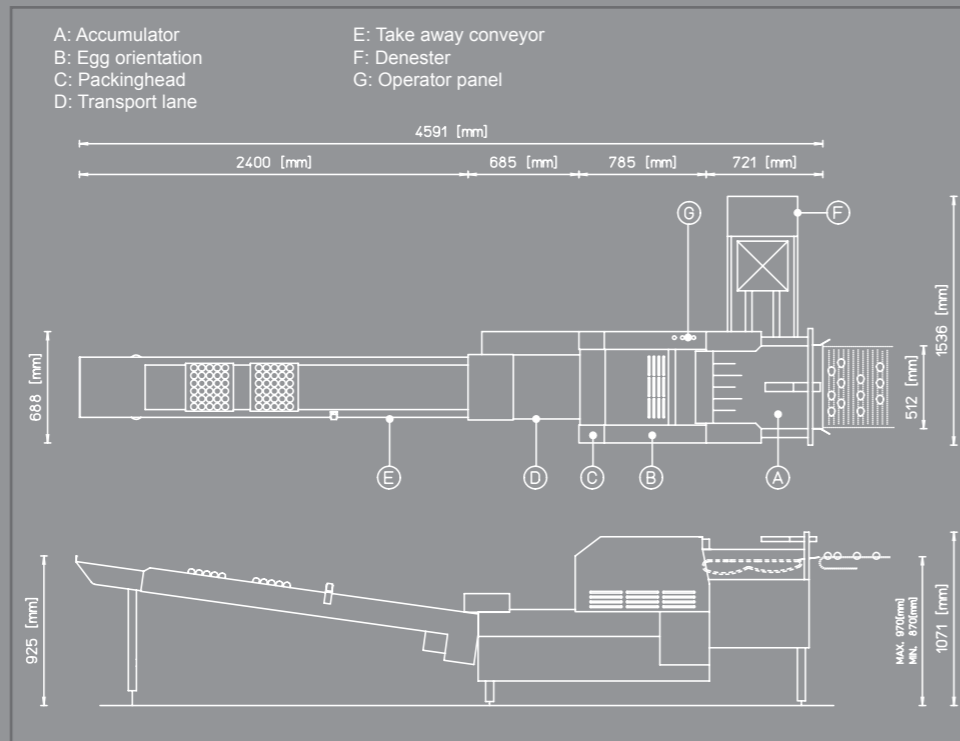
*The STAALKAT farmpackers - packing your eggs, straight line, point down! Real simple, real smart.*

### 70 CPH /25.200 eggs/hour

A successful design, easy to place, easy to maintain, easy to operate. Installation anywhere.

Power supply: 230V-0-ground, 1-phase-AC, 50/60 Hz

Energy: 1,2 kVA



## Best warranty program Anywhere!

With the world's best farmpacker program, of course we also give you the world's best warranty program. 2 years warranty on the machine.

Delivered with additional parts for your peace of mind.

## Quality

**SANOVO TECHNOLOGY GROUP's** definition of quality is based on an understanding of customer needs.

*Demand of performance, uptime and reliability from the equipment is required. Starting at product conception through manufacture via quality control, in house testing and product distribution all the way to after-sales service, SANOVO TECHNOLOGY GROUP offers you much more than simply a machine – you benefit from a superior level of support as well.*





# The STAALKAT Farmpacker family

Farmpacker 40



Farmpacker 70



Farmpacker 100



Farmpacker 200



## **SANOVO TECHNOLOGY GROUP**

5210 Odense - Denmark

Tel.: +45 66 16 28 32

info@sanovogroup.com

## **STAALKAT INTERNATIONAL B.V.**

7122 MP Aalten – Pays Bas

Tél. : +31 543 473 868

staalkat@sanovogroup.com

[www.sanovogroup.com](http://www.sanovogroup.com)

*STAALKAT pioneered the world's first egg packer in 1963, and only 5 years later, introduced the second generation, calling it a farmpacker. Ever since, STAALKAT has been supplying the global egg industry with reliable, robust, and simple packing solutions.*

*Most eggs in the world - before they end up as a consumer product as shell egg or egg product have been handled by a SANOVO TECHNOLOGY GROUP product.*

*All products pass an extensive test in our facilities before being shipped out ensuring easy installation and peace of mind.*

*Our products meet international requirements and standards, and, as a turnkey supplier, SANOVO TECHNOLOGY GROUP offers every aspect of egg handling and processing.*